



ENERGY DEPARTMENT
PRIME MINISTER'S OFFICE

BRUNEI DARUSSALAM

EMERGENCY RESPONSE BRIEFING

YOUR SAFETY
IS OUR PRIORITY

If you discover a fire, activate the nearest
FIRE CALL POINT

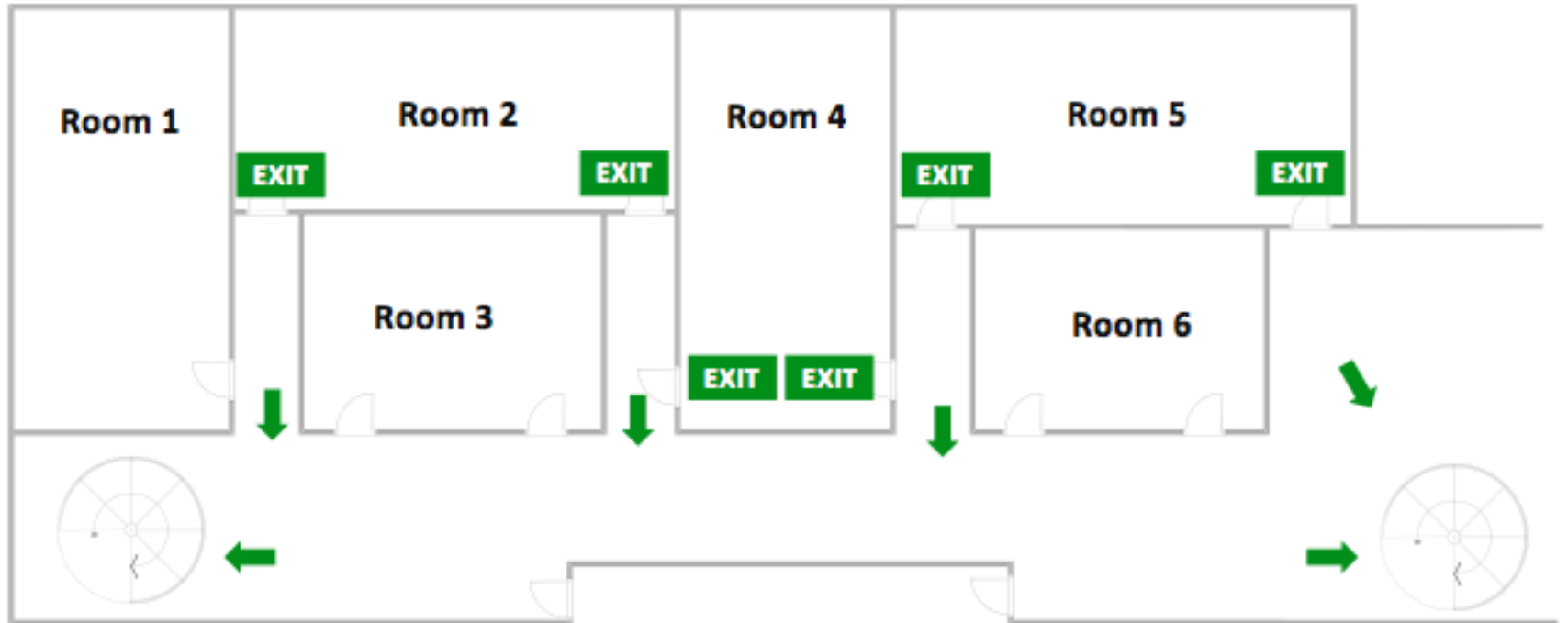


Continuous Bell Ringing Evacuate Building

Leave building immediately.
Do Not Re-enter affected area.



BRIDEX CONFERENCE HALL – LEVEL 1



Note: Your ASSEMBLY area is in the parking lot in front of the Conference Hall

Proceed to Assembly Points B



**The Car Park in front of the
Convention Hall**



SAFETY REMINDER

**Remain in the assembly point
until further instructions.**

**Do not drive your car
- Priority to emergency vehicles**

Thank You

For your attention

Your safety is our utmost important